

STX LP

1 kW to 5 kW FM Low Power Transmitter

Flexibility

The STX LP Generation II is designed for the world's digital standards and unique applications

- HD Radio™ Capable
- DRM+ Capable
- Synchronous FM Systems
- IP Connectivity for complete transmitter status
- Scalable architecture allows easy upgrade path to increase power in the future

Redundancy

- Multiple power amplifier decks and power supplies for 2 kW, 3 kW, and 5 kW versions allow the transmitter to be on air in emergency situations
- Unique exciter and controller design allows the ability to add an optional second controller/exciter for full control and redundancy in the event of an exciter or controller failure
- Ideal for N+1 Systems

Performance

- Exciter Audio performance has been a hallmark of BE for decades. The new exciter and controller in the STX LP provides audio performance that rivals the BE FXi Series of exciters
- Improved AC to RF efficiency reduces energy costs
- New enhanced GUI provides access to all important transmitter parameters
- SNMP Level 3 Control and Security

Reliability

- Since 1959, BE has provided equipment to radio broadcasters that is designed to last for the long haul. Designed and manufactured in the USA, the STX LP line of transmitters has been installed in over 1000 locations worldwide since its inception a few years ago. A BE transmitter is built to last.
- 2nd Generation design includes updates to power supplies and fans, insuring an even longer transmitter life



STX LP 5 kW shown

The STX LP Generation II effectively combines the highest quality engineering with the most features making it the best FM transmitter value in its class. The combination of reliability, flexibility, redundancy, and performance insures the STX LP is a smart purchase for your radio station.

For complete specifications visit our website: www.bdcast.com



The Brains of the STX LP Generation II

The STX LP Generation II transmitter is a truly revolutionary new design. The new digital exciter includes top of the line audio specifications rivaling those of the legendary BE exciters. Also, the exciter uses a CAN Interface allowing unique redundancy and control options for the exciter and controller.

Redundancy Options

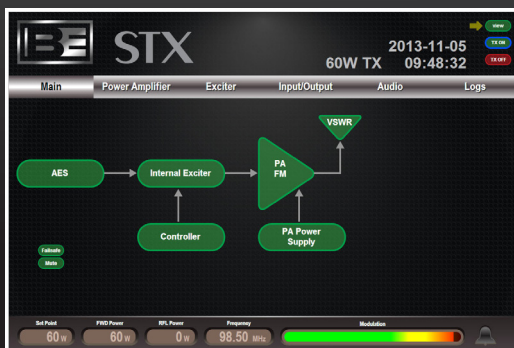
By utilizing a CAN Interface, the STX LP Generation II includes an embedded controller on each power amplifier. With this unique approach, a 2kW, 3kW, or 5kW transmitter can be equipped with dual controller/power amplifier sections. In this configuration, either controller/amplifier section can operate as a master insuring no loss of air time as the system will automatically switch to the second controller/exciter if necessary.



STX LP 1 kW, which is also the main controller/power amplifier section in the 2 kW, 3 kW, and 5 kW versions.

New Enhanced GUI

Standard with the STX LP Generation II transmitter line is an updated GUI. If your site has IP connectivity, you can access all important transmitter parameters including transmitter indication on your laptop, tablet, or smartphone any place, any time.



Broadcast Electronics (BE) offers studio automation and complete RF systems for radio. BE manufactures AM, FM and HD Radio transmitters and studio systems for managing audio programming and automating radio text as well as web interactive tools for today's mobile and social media savvy listener.

Other Great BE Products

- STX LP FM Transmitters from 1 kW to 5 kW
- A and E Series AM Transmitters from 500 W to 10 kW
- T Series Tube Transmitters from 10 kW to 70 kW
- S Series Solid State Transmitters from 10 kW to 40 kW
- Commotion: World's Greatest Social Media and Mobile Platform for Radio
- AudioVAULT: AV FlexX and Flex Xpress provide the most tools for Radio Automation

